

**LEGEND AND KEY**

- SOURCE 4 504 - 575w
- SOURCE 4 364 - 575w
- SOURCE 4 264 - 575w
- SOURCE 4 194 - 575w
- SOURCE 4 25-50 ZOOM - 575w (WARMERS ONLY)
- SOURCE 4 MULTIPAR - 8' 0" 12 LIGHT 4 CKT - WFL - 575w/CELL (BACKLIGHT)
- SOURCE 4 MULTIPAR - 8' 0" 12 LIGHT 3 CKT - MFL - 575w/CELL (GROUND ROW)

**L161 Color**

Temp Use (User Field 1)  
Unit Number  
Dimmer Number  
Channel Number

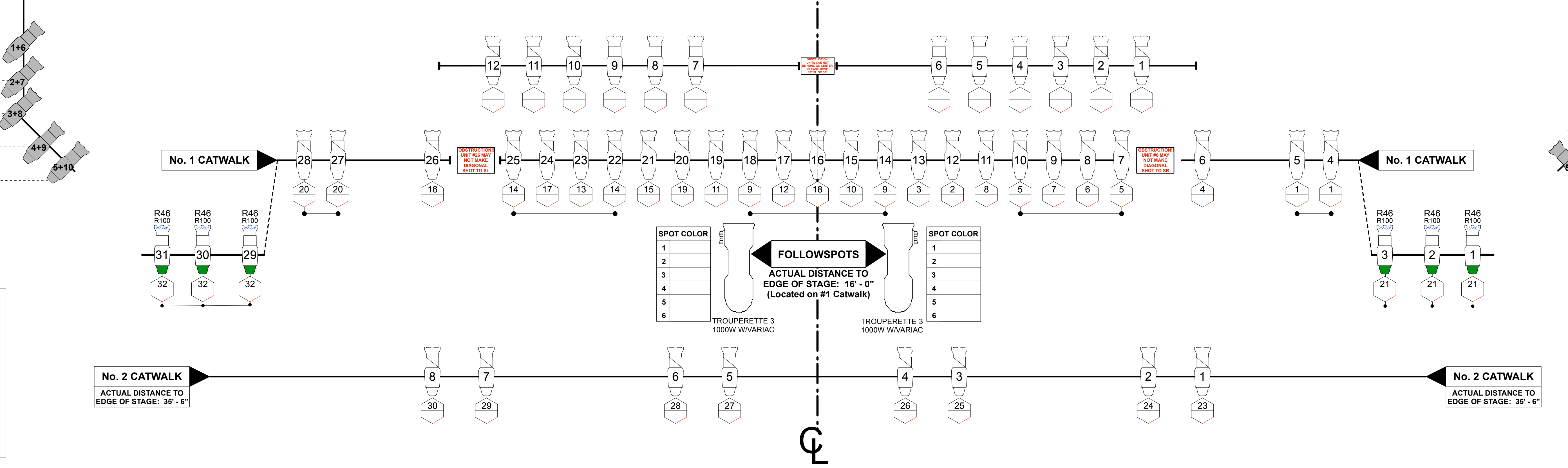
**BERKEY FAR CYC - 3 CKT - 1KW/CELL**

**BOX BOOM STAGE RIGHT**

**BOX BOOM STAGE LEFT**

**GENERAL NOTES**

- PROSCENIUM WIDTH: 42'-11"
- PROSCENIUM HEIGHT: 21'-1"
- EDGE OF STAGE TO BACK WALL: 35'-6"
- EDGE OF STAGE TO LAST HARD LEG: 28'-11"
- LOADING DOOR: 5'-3" WIDE X 9'-4" HIGH
- LIGHT CONTROL, ETC EOS
- DIM CONTROL: 366 ETC SENSORS3 DIMMERS: 348 @ 2.4KW 18 @ 6KW



**The Joyce Theater**

175 Eighth Avenue  
New York, NY 10011  
Tel: (212) 691-9740  
Fax: (212) 727-3658

**REPERTORY LIGHT PLOT**

Jeff Segal: Director of Production - ext. 215  
Kelly Atallah: Lighting Supervisor - ext. 216  
TBA: Technical Director - ext. 214

PLATE #	VISITING COMPANY	PHONE	PHONE
1	PRODUCTION MANAGER	PHONE	PHONE
	LIGHTING DESIGNER	PHONE	PHONE

SCALE: 1/2" = 1'-0" DATE: 9/11/21 REV: \_\_\_\_\_

VECTORWORKS VERSION COPYRIGHT 2021 BY JEFF SEGAL & KELLY ATALLAH